

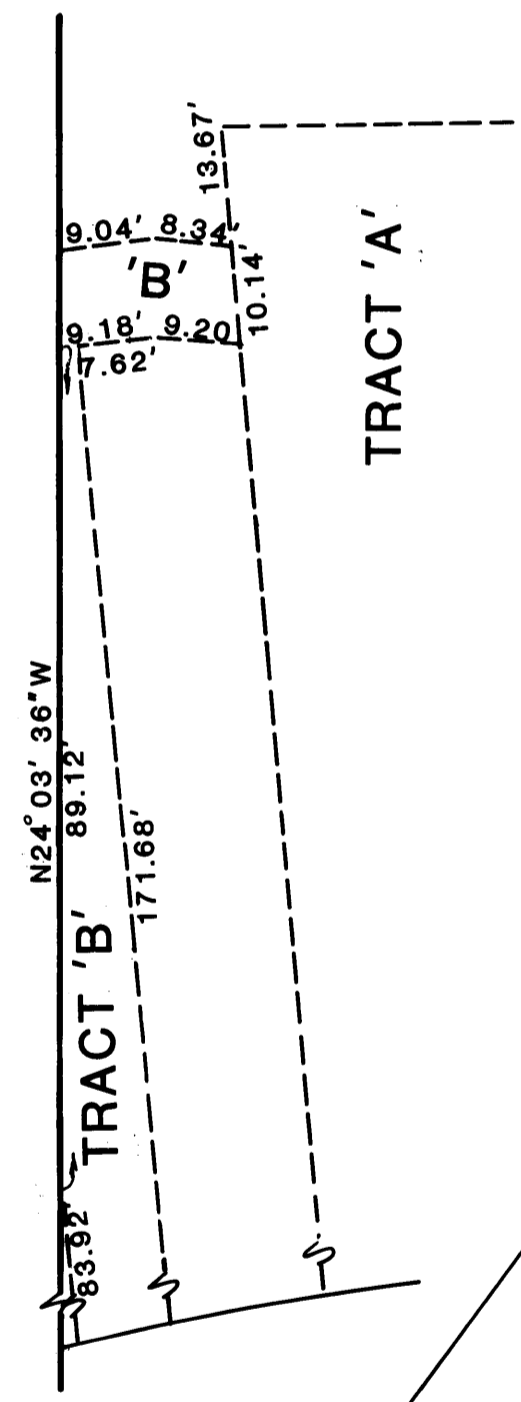
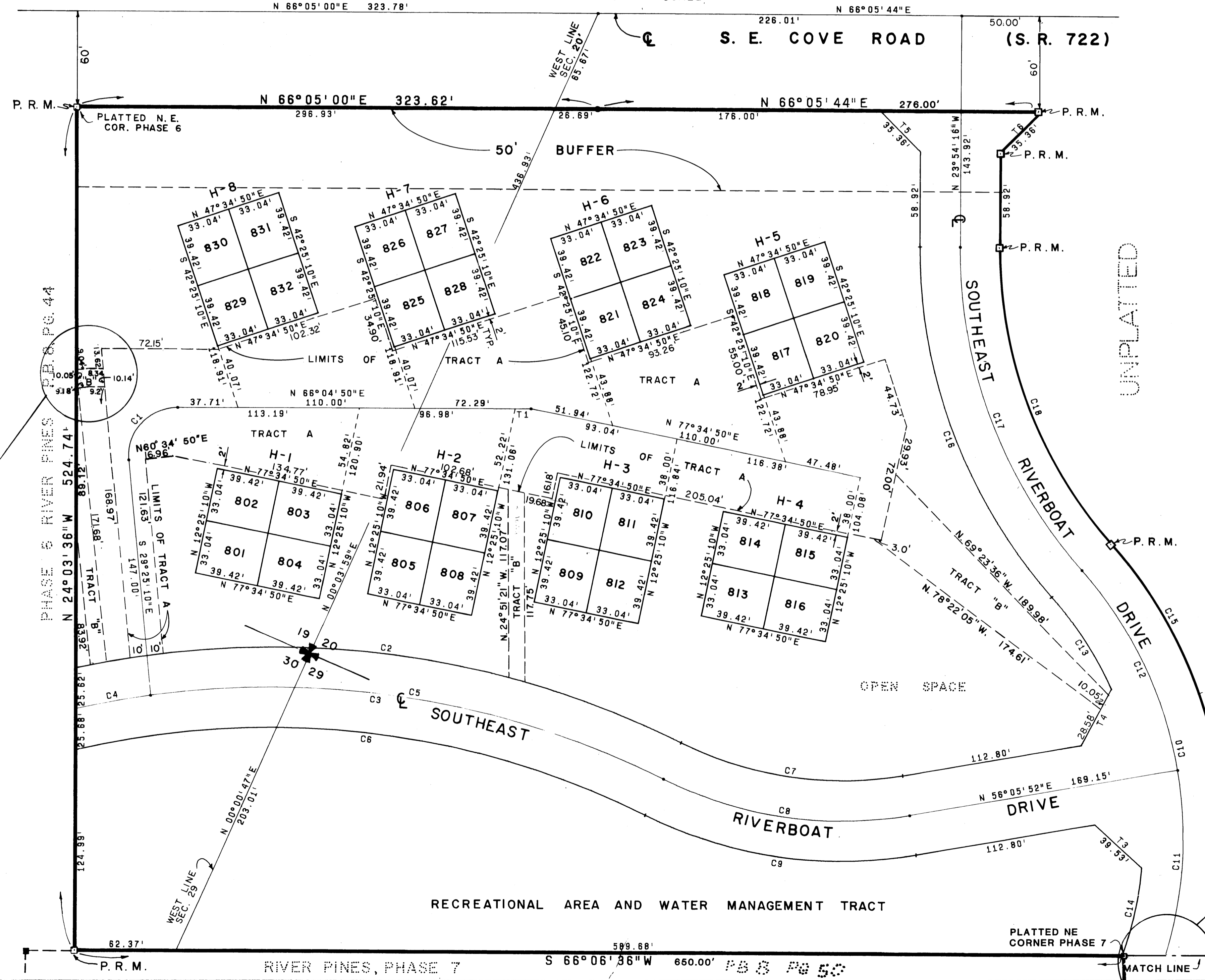
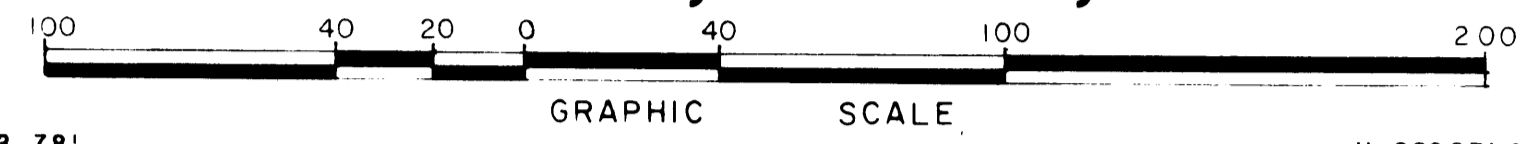
# RIVER PINES

## AT MILES GRANT

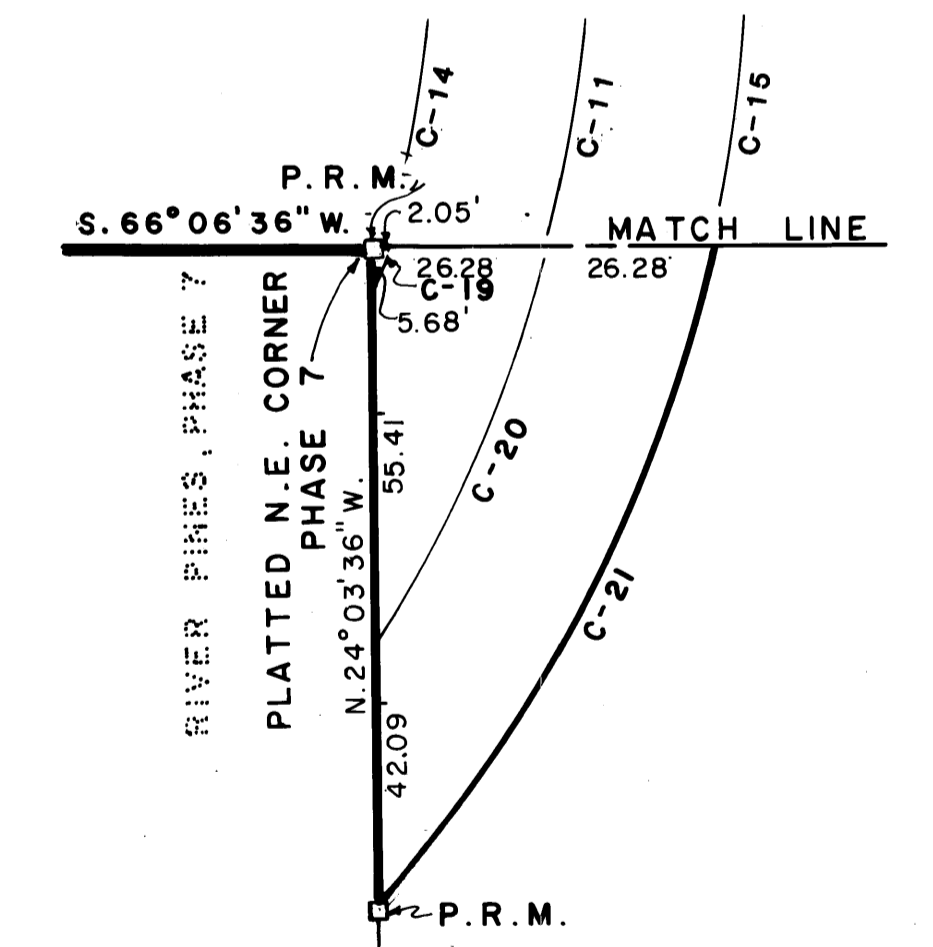
### PHASE 8 OF A P.U.D.

A RESUBDIVISION OF GOVERNMENT LOTS 1, 3, 5, & 6  
IN SECTIONS 19, 20, 29 & 30, TOWNSHIP 38 SOUTH, RANGE 42 EAST,  
MARTIN COUNTY, FLORIDA, JAN. 1981

PL B 8  
F 54



DETAIL



DETAIL

NOTE:  
FOR CURVE TABLES  
SEE SHEET 1 OF 3

<b>ADAIR &amp; BRADY, INC.</b> CONSULTING ENGINEERS & LAND SURVEYORS <small>LAKE WORTH WEST PALM BEACH ORLANDO</small>		<b>RIVER PINES</b> AT MILES GRANT	
SCALE 1" = 40'	DRAWN G.M.W.	DATE 1/81	SHEET <b>3 OF 3</b>
JOB NO. 6-8525D	CHECKED J.L.K.	DATE 1/81	PROJECT NO. <b>FP 1155</b>